

# Magnetic Pick-Up

## Model 11408X

### Overview

Model 11408X RPM sensor is designed for diesel truck use on SPEEDTRAP™ systems using model 8210 electronic speedswitch.

### Typical applications

- Tank trucks
- Vacuum trucks
- Oil field trucks and equipment
- Offshore engines
- Trenchers
- Drilling rigs
- Oil skimmer barges
- Aircraft ground equipment

### Key features and benefits

- Permanent magnet RPM sensor
- Fits in standard  $\frac{3}{4}$  inch UNF hole in flywheel housing
- Sends pulse signal to CSX-300 or AMOT 8210 range speed switches
- Rubber boot included for sensor leads
- Available installation kit includes toggle switch, dashboard label and shielded cable



**Model 11408X  
Magnetic Pick-up**

# Magnetic Pick-up - Model 11408X

## Operation

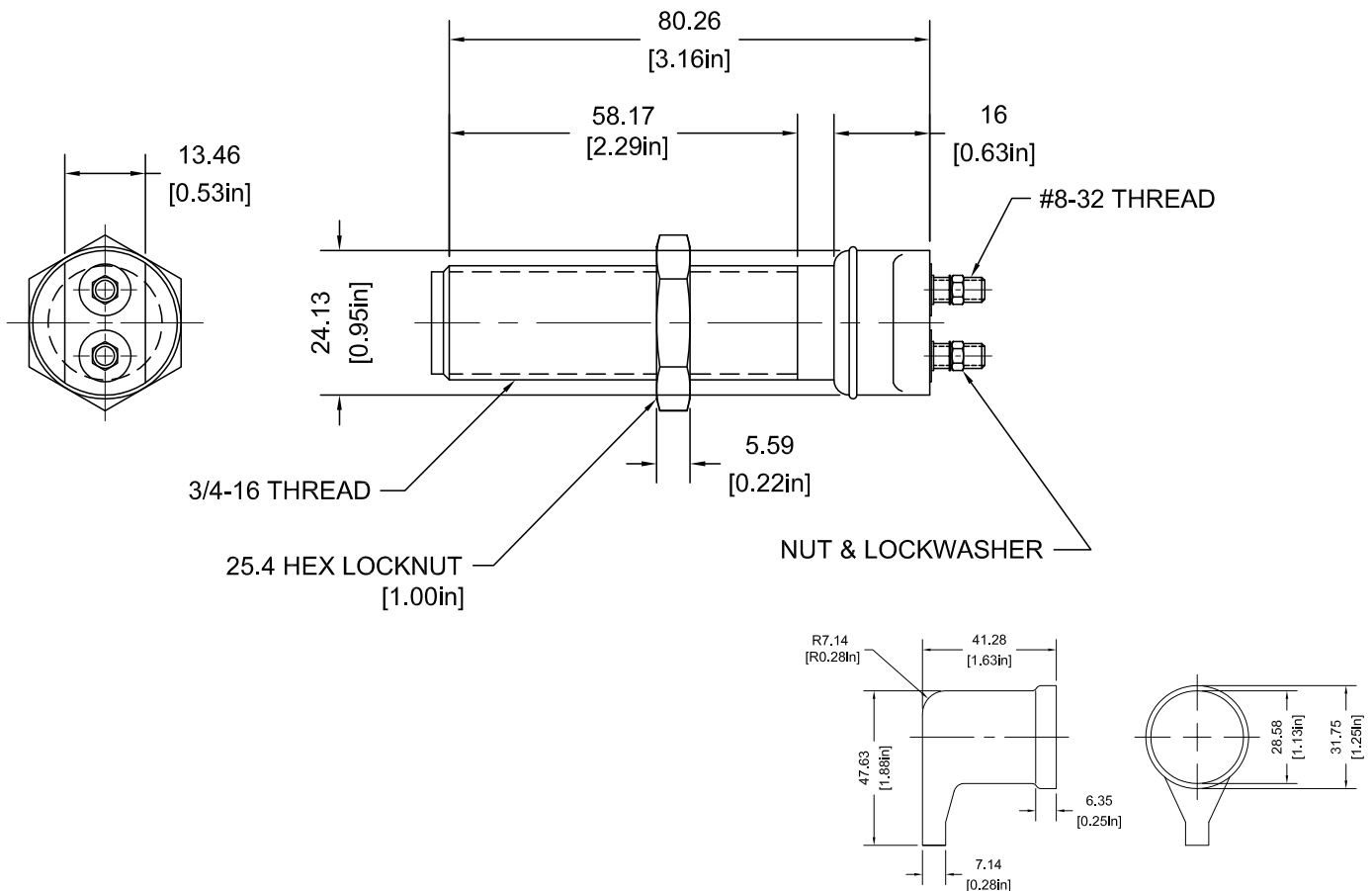
A permanent magnet built into the sensor provides a magnetic field at the base of the sensor. As each tooth of the flywheel passes through the magnetic

field, a signal (voltage pulse) is generated. This signal is then sent to the 8210 Speedswitch for monitoring.

## Specification

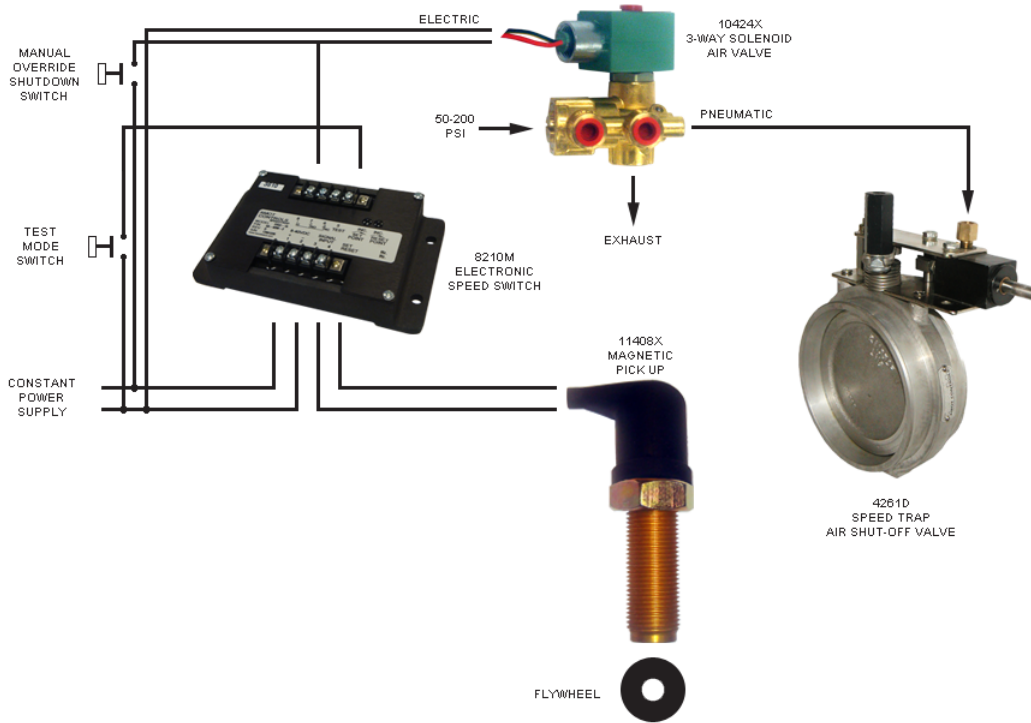
<b>Power supply:</b>	10.2 - 12.6 VDC	
<b>Pressure requirements:</b>	3.45 - 13.79 bar	50 - 200 psi
<b>Temperature:</b>	18 - 49°C	0 - 120°F
<b>Valve body:</b>	Brass	
<b>Valve seals:</b>	Buna N (Nitrile)	
<b>Valve piston:</b>	303 SS	
<b>Pressure Connections:</b>	1/4" NPT	
<b>Mounting threads:</b>	1/4 - 2.0 x 3/8" deep	
<b>Approvals:</b>	CSA and UL listed	

## Dimensions



## Typical application

### Electro/Pneumatic Automatic System (Manual Pneumatic)



## How to order

To order specify Model 11408X (with boot).

To order a replacement Silicone boot specify Model 11409.

## Americas

---

AMOT USA  
8824 Fallbrook Dr  
Houston, TX 77064  
USA

Tel +1 (281) 940 1800  
Fax +1 (713) 559 9419  
Email [customer.service@amot.com](mailto:customer.service@amot.com)

## Asia Pacific

---

AMOT China  
Bd. 7A, No. 568, Longpan Rd., Malu Jiading  
Shanghai 201801  
China

Tel: +86 21 5910 4052  
Fax: +86 21 5237 8560  
Email: [shanghai@amot.com](mailto:shanghai@amot.com)

## Europe, Middle East and Africa

---

AMOT UK  
Western Way  
Bury St Edmunds  
Suffolk, IP33 3SZ  
United Kingdom

Tel +44 (0) 1284 715739  
Fax +44 (0) 1284 760256  
Email [info@amot.com](mailto:info@amot.com)

AMOT Controls GmbH  
Rondenbarg 25  
22525 Hamburg  
Germany

Tel +49 (0) 40 8537 1298  
Fax +49 (0) 40 8537 1331  
Email [germany@amot.com](mailto:germany@amot.com)